

MORSE

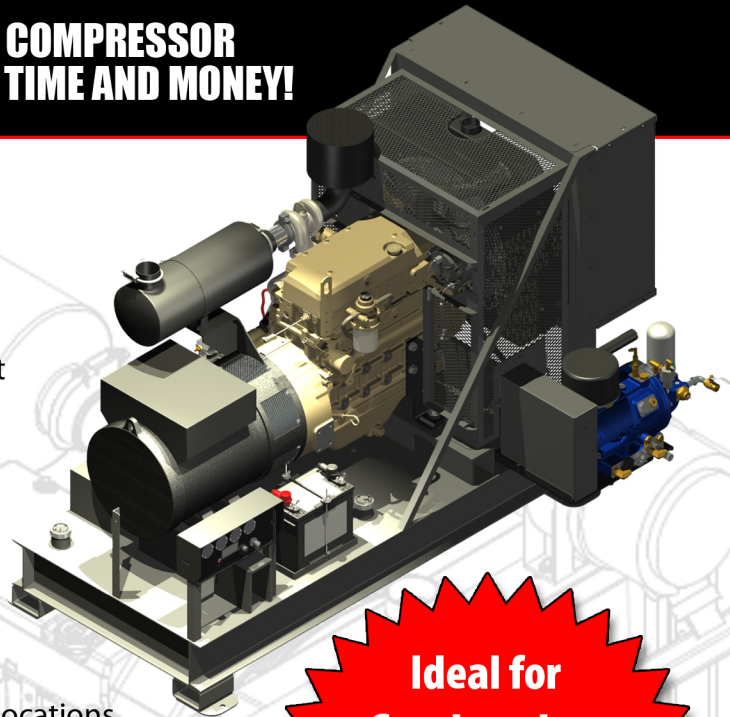
GENERATORS

Model GC-40 and GCRS-40-40

**INTRODUCING A UNIQUE GENERATOR / COMPRESSOR
SOLUTION DESIGNED TO SAVE YOU SPACE, TIME AND MONEY!**

Model GC-40 Diesel Generator

- Model PE5030TF270 5 cyl John Deere turbo charged diesel engine rated at 80 hp
- Electronically controlled engine governor
- Mecc Alte generator rated at 35KW 220/1/60 volt or 40KW 220/3/60 volt
- Single Phase 220 volt rated at 159 amps, Three Phase 220 volt rated at 139 amps
- Standard panel with analog gauges
- MMP2 generator panel (wiring and disconnect required)
- Optional meter wiring, disconnect and terminal block available
- Integrated base/50 gallon fuel tank with two fill locations
- Low oil pressure shutdown switch
- High temperature coolant shutdown switch
- Totally enclosed engine and compressor drive sections.
- Meets E.P.A. Tier 2 emissions standards
- 2 year warranty on engine covered by John Deere
- 1 year warranty on all other components



**Ideal for
confined work areas
such as
Mobile Spray Rigs,
Service Trucks!**

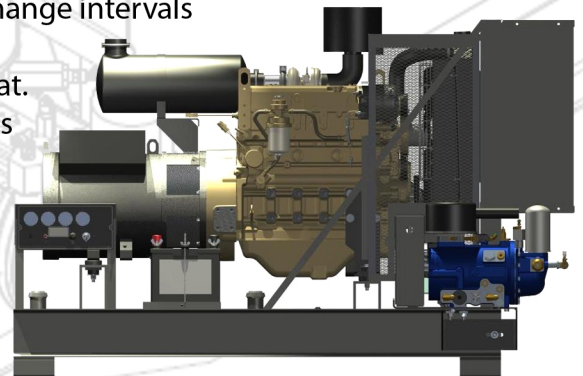
Model RS-40 Rotary Screw Air Compressor

- ***Eliminates the need for tank mounted piston air compressors, as no air receiver is required. This will increase storage area and reduce equipment space requirements***
- Up to 70 CFM capacity at 125 psi (factory setting 40 CFM at 125 psi)
- Can be ordered factory mounted or can be field installed at a later date
- Uses ATF3 automatic transmission fluid rated for 500 hours between change intervals
- Spin on air/oil separator rated for 1000 hours between change intervals
- Washable screen oil filter
- Cooler exhaust plenum for ease of ducting unwanted heat.
- Easy to see minimum and maximum oil level sight glasses
- High compressor oil temperature shutdown switch



**Compact
Design**

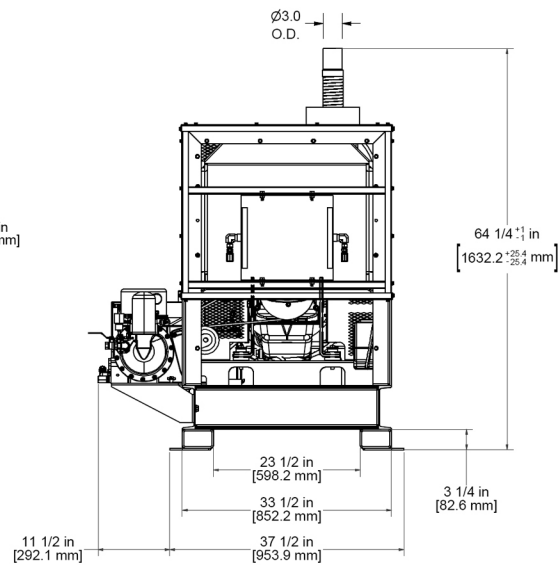
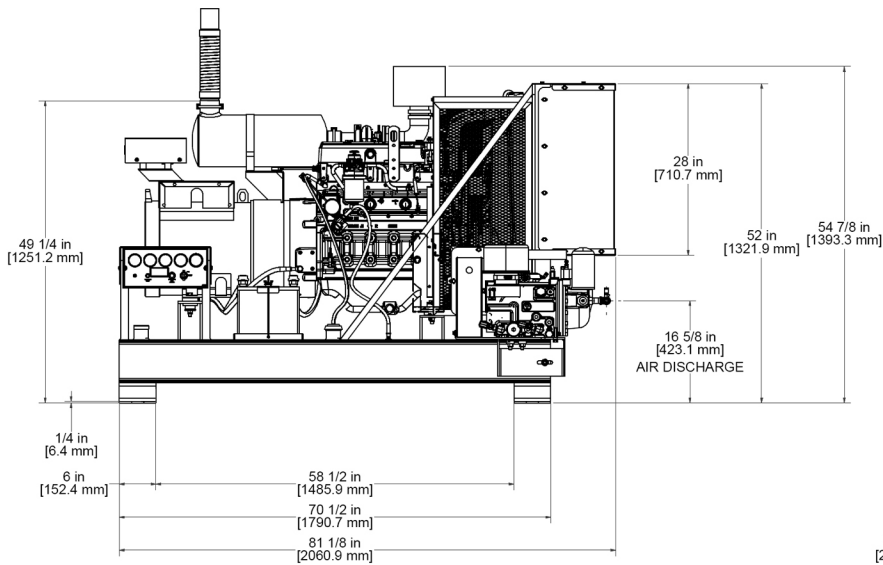
Other sizes available or can be custom built to your requirements.



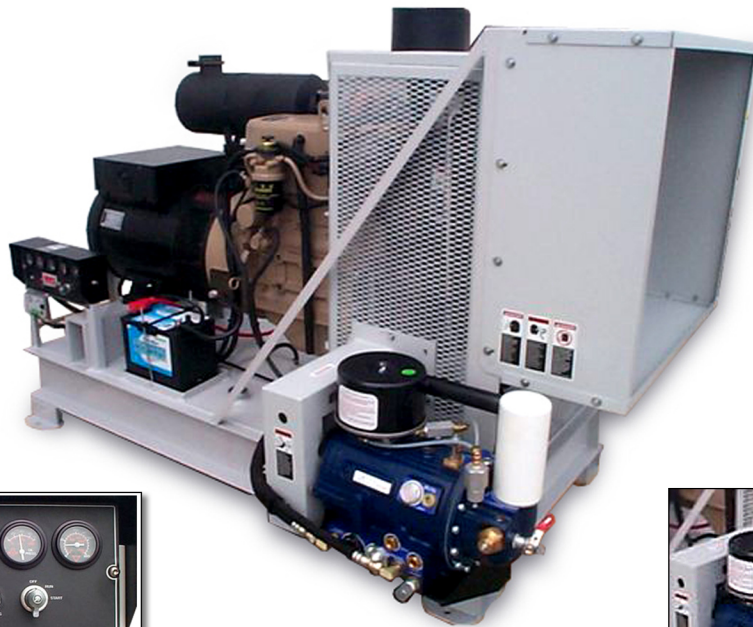
Model GC-40 Diesel Generator shown with optional RS-40 Rotary Screw Air Compressor

Model GC-40 Dimensions:

(Note: Production models may vary from illustrations)



Weight GCRS-40-40 2200 lbs
 Weight GC-40 1900 lbs
 * without fuel



Analog Gauge Panel

For additional information contact your
 authorized Morse Industrial Equipment Dealer



Optional RS-40 Rotary Screw Air Compressor
 with exhaust plenum



www.morseindustrial.ca

MORSE
 INDUSTRIAL EQUIPMENT

Mississauga Ontario
 Phone: 647-393-1212 Fax: 905-824-9406

DV06GC40V10

Morse Industrial Equipment reserves the right to make modifications or improvements